

ADS

Smart equipment.
Clean environment.

HSM[®]

Great Products, Great People.



HSM Horizontal Baling Presses

Waste Management and Recycling Solutions for Industry,
Retailers and Manufacturers.

Ad Stil S.R.L.
Str. Abatorului, nr. 6A
607355, Nicolae Balcescu
Bacau, Romania
www.mbtro.com
office@mbtro.com
facebook.com/adstileequipments

www.hsm.eu



ADS
Smart equipment.
Clean environment.

Save on waste costs with volume reduction!

HSM baling presses can reduce the volume of your waste by up to 95%! Which means valuable space is saved on site and you have the opportunity to generate a secondary raw material of sorted bales, which can be incorpo-

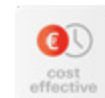
rated back into the recycling system. What's more, the baled recycled material has a value which can offset your disposal costs and may even generate a profit.



Volume reduction up to 95 %



Perfect HGV load utilisation



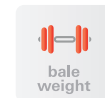
Attractive price-performance ratio



Easy-to-use



Energy efficient



Bale weight up to 850 kg

HSM quality „Made in Germany“

HSM has always committed itself to the principle of "Quality". HSM relies on Germany as a production location and quality products "Made in Germany". All three German HSM plants are certified under DIN EN ISO 9001. Since we manufacture our products ourselves, we can guarantee first-class quality. The

large vertical range of manufacture is characteristic of HSM and brings decisive advantages. Production can thus be controlled reliably, flexibly and independently. But it also allows us to control the origin, quality and ingredients of the raw materials and other materials used.



Application areas

Wholesale, manufacturers, logistics, central storage facilities, paper industry and many more.



Materials

Paper, cardboard, plastic film, expanding foams, polystyrene, hollow vessels, metal buckets, barrels and many more.



Central storage facilities



Printing plants



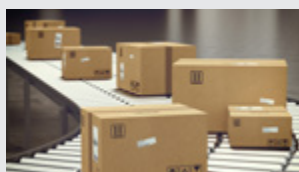
Foam



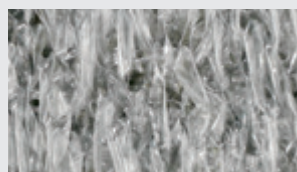
Stiff plastic



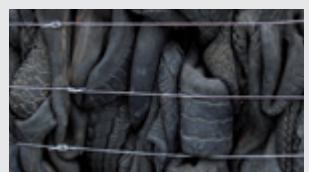
Food retailers



Distribution centres

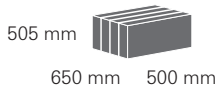


PET



Car tyres

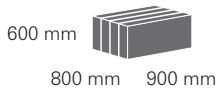
HSM 8 TE



In terms of performance, efficiency and flexibility, our mobile HSM 8 TE small baler is hard to beat. This compact baling press is extremely easy to operate: insert the strapping tape, switch it on and watch it go! The strapping and ejection of the bales is executed with ease. The complete bale ejection means that the compact bales are ejected by the machine directly onto a pallet and can be easily transported to a storage location.

- Large loading aperture
- Automatic return stroke of press ram after the pressing cycle
- Secure loading flap and bale removal door
- Convenient bale strapping with continuous polyester tape
- Automatic bale finish signal
- Intuitive, multilingual operational guidance via graphic description

HSM 12 Gigant

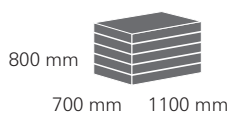


Our HSM 12 Gigant is in its element anywhere where voluminous cardboard packaging, plastic film or other materials need to be pressed. The extremely large loading aperture makes the unit simple and convenient to load. This results in compact bales which can be easily transported. If the baler is required urgently in another part of the company – no problem: its four castors mean that it can be used anywhere at any time.

- Large loading aperture
- Fast, convenient, 3-fold bale strapping with continuous polyester tape
- The hydraulic counterplate provides the highest ease of operation and reliability
- Automatic return stroke of press ram after the pressing cycle
- The full stroke of the press ram ejects the bale completely
- Automatic bale finish signal

Model	HSM 8 TE	HSM 12 Gigant
Pressing power in kN	80	140
Motor in kW	4	7,5
Voltage / Frequency	3 x 400 V / 50 Hz	3 x 400 V / 50 Hz
Loading aperture (W x L) in mm	645 x 730	800 x 1200
Loading height in mm	690	780
Bale weight in kg (depending on material)	up to 70	up to 170
Maximum bale size (W x H x L) in mm	650 x 505 x 500	800 x 600 x 900
Cycle time idle operation (theor.) in sec.	26	30
Dimensions of machine (L x W x H) in mm	2505 x 813 x 868	4263 x 1030 x 1623
Machine weight in kg	554	1330
Strapping	3-fold with polyester tape	3-fold with polyester tape

HSM HL 1615

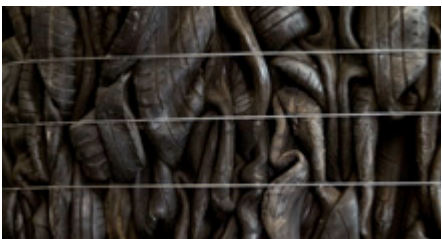
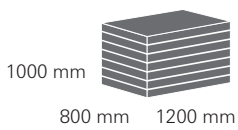


This all-purpose stationary baler is designed for high loads and completely flattens paper scraps, large cardboard boxes, plastic film and comparable materials – even rigid paint cans and light metal barrels (up to 200 litres). To handle even extremely one-sided loads in the press chamber, the press ram guidance has an especially large and sturdy construction. Both large loading flaps, which together function as an over-size feeding opening, make it possible to compact voluminous materials simply and quickly without having to manually tear them into smaller pieces beforehand.

- High throughput via large split-loading hopper and short compression cycle
- The hydraulic counterplate provides the highest ease of operation and reliability
- Manual bale strapping with continuous polyester tape
- The full stroke of the press ram ejects the bale completely
- Optimum operator protection provided by lateral protective grating and safety lock for the loading flaps
- Baler can be transported for reassembly
- Torsion resistant press ram guidance
- Automatic bale finish signal

Model	HSM HL 1615
Pressing power in kN	150
Motor in kW	7.5
Voltage / Frequency	3 x 400 V / 50 Hz
Loading aperture (W x L) in mm	700 x 1500
Loading height in mm	990
Bale weight in kg (depending on material)	up to 200
Maximum bale size (W x H x L) in mm	700 x 800 x 1100
Cycle time idle operation (theor.) in sec.	32
Dimensions of machine (L x W x H) in mm	4470 x 1343 x 2042
Machine weight in kg	1890
Strapping	4-fold with polyester tape

HSM HL 3521 S / HL 3521 T



To ensure our customers have the right machine for their needs, we have developed two variants of our tried and tested HSM HL 3521 baler. The HSM HL 3521 S, with its exceptionally large loading aperture is the perfect machine for compressing large quantities of paper, cardboard, foils or packaging material and for extremely large and bulky materials. It has also been especially designed for compressing strongly expanding material such as foam. The model HSM HL 3521 T can be filled via conveyor and is specially designed to compact tyres. Of course, other packaging materials can also be compressed.

- Hydraulic counterplate for bale removal ensures optimum operating convenience and safety
- The full stroke of the press ram ejects the bale completely
- Stored-program controller PLC
- High levels of compression are ensured by optimally dimensioned retaining claws
- Optimum operation ensured by the return stroke of the press ram
- Hydraulic loading flap for maximum operating comfort and for precompressing
- Safeguarding of the operating area with protective grid (HSM HL 3521 T) or infrared light curtains (HSM HL 3521 S) for maximum operator safety
- The unique design and controllable positioning of the press ram allows for easy cleaning and servicing

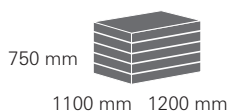
Model	HSM HL 3521 S	HSM HL 3521 T
Pressing power in kN	320	320
Motor in kW	9.2 / 22	22
Voltage / Frequency	3 x 400 V / 50 Hz	3 x 400 V / 50 Hz
Loading aperture (W x L) in mm	800 x 2100	800 x 2100
Loading height in mm	1200	1200
Bale weight in kg (depending on material)	up to 600	up to 850
Maximum bale size (W x H x L) in mm	800 x 1000 x 1200	800 x 1000 x 1200
Cycle time idle operation (theor.) / incl. loading flaps in sec.	71 / 44	44
Dimensions of machine (L x W x H) in mm	8100 x 1903 x 2493	8120 x 1870 x 2658
Machine weight in kg	7100	8100
Strapping	6-fold with Quick-link wire (tape as option)	5-fold with Quick-link wire

HSM HL 4809 ST / HL 4812



With their technical features, operating concept and special design for bulky cardboard, the HSM HL 4809 ST and HSM HL 4812 are optimal for retail and small central storage facilities. The HSM HL 4809 ST produces bales with a cross-section of 1100 x 750 mm and a weight of up to 420 kg, therefore achieving an optimum HGV capacity. The integrated hydraulic lifting/tilting device significantly reduces the number of people required to compact the recycling material. Both models are an economical solution with a fast return on investment. The HSM HL 4812 can be fed manually or via conveyor. Bale ejection is handled by the machine efficiently and safely with minimum operator effort. All in all a sophisticated solution for small to medium quantities at a great price-performance ratio and high automation level.

HSM HL 4812



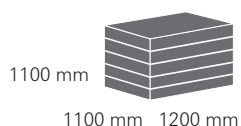
- Very low space requirement
- Compresses cardboard and film
- Especially large loading aperture for bulky materials
- Convenient filling via hydraulic lifting/tilting device (HSM HL 4809 ST)
- HSM HL 4812 suitable for continuous loading, for example via conveyor
- Hydraulic sliding door for bale removal ensures optimum operating convenience and safety
- High specific pressing power provides a high compaction of the material and consequently an optimum HGV load
- Intuitive, multilingual operational guidance via graphic description
- Pallet locking mechanism for safe bale removal
- The HSM HL 4809 ST is also available as a variant with automatic start or with a bevelled hopper for manual loading

Model	HSM HL 4809 ST	HSM HL 4812
Pressing power in kN	480	480
Motor in kW	9.2 + 1.5	15 / 22
Voltage / Frequency	3 x 400 V / 50 Hz	3 x 400 V / 50 Hz
Loading aperture (W x L) in mm	1020 x 900	1020 x 1250
Loading height in mm	-	1455
Bale weight in kg (depending on material)	up to 420	up to 420
Maximum bale size (W x H x L) in mm	1100 x 750 x 1200	1100 x 750 x 1200
Cycle time idle operation (theor.) in sec.	approx. 35	approx. 37.5 / 27.3
Dimensions of machine (L x W x H) in mm	5926 x 1978 x 2042	5116 x 2411 x 2558 (bevelled hopper)
Machine weight in kg	approx. 5900	approx. 7000
Strapping	4-fold horizontally with Quick-link wire	4-fold horizontally with Quick-link wire

HSM HL 7009 / HL 7009 MGB



HSM HL 7009 / HL 7009 MGB



These very compact, horizontal working counterplate presses are suitable for large disposal tasks in retail and in small to medium central facilities. The bales from an HSM HL 7009 have a cross-section of 1100 x 1100 mm with a bale length of 1200 mm and can weigh up to 600 kg. Both machines therefore achieve an optimum HGV capacity. With the large bales from the HSM HL 7009, you also save on handling expenses. The integrated hydraulic lifting/tilting device significantly reduces the number of people required to compact the recycling material. Both models are an economical solution with a fast return on investment.

- Very low space requirement thanks to compact and sturdy design
- HSM HL 7009 MGB – emptying of large refuse containers (1 x 1100 l or 2 x 240 l)
- Compresses cardboard and plastic film
- Especially large loading aperture for bulky materials
- Convenient filling via hydraulic lifting/tilting device
- Hydraulic sliding door for bale removal ensures optimum operating convenience and safety
- Optimised bale dimensions and bale weights for efficient truck loading
- High specific pressing power provides a high compaction of the material and consequently an optimum HGV load
- Intuitive, multilingual operational guidance via graphic description
- The HSM HL 7009 is also available as a variant with automatic start or with a bevelled hopper for manual loading

Model	HSM HL 7009	HSM HL 7009 MGB
Pressing power in kN	700	700
Motor in kW	9.2 + 1.5	9.2 + 1.5
Voltage / Frequency	3 x 400 V / 50 Hz	3 x 400 V / 50 Hz
Specific pressing power in N/cm ²	approx. 58	approx. 58
Cycle time of lifting / tilting system in sec.	17	17
Cycle time in idle operation (theor.) incl. lifting / tilting system in sec.	approx. 47 (full stroke), approx. 33 (part stroke)	approx. 47 (full stroke), approx. 33 (part stroke)
Loading aperture (W x L) in mm	1020 x 900	1020 x 900
Bale size (W x H x L) in mm	1100 x 1100 x 1200	1100 x 1100 x 1200
Bale weight in kg, depending on material in kg (with 1200 mm length)	up to 600	up to 600
Dimensions of machine (W x D x H) in mm	5992 x 2066 x 2394	5813 x 1994 x 3690
Required space for the machine including pivoting radius of the lifting/tilting system (trolley) and pallet for the bale (W x D x H) in mm	5992 x 2901 x 2975	6523 x 1994 x 3782
Machine weight in kg	approx. 7400	approx. 7400
Strapping, manual	4-fold horizontally with Quick-link wire	4-fold horizontally with Quick-link wire

Consumable materials

On this page you can find consumables for continuous operation of your HSM horizontal baling presses.



Plastic bags

Order number	Suitable for press models with standard equipment	Dimensions W x D x H in mm	Weight / 25 pcs.
6205 595 000	HSM 8 TE	700 x 620 x 1500	8.3 kg
6214 995 000	HSM 12 Gigant / HL 1615	950 x 900 x 1800	12.3 kg



Quick-link wire

Order number	Suitable for press models	Wire diameter / length in mm
6236 993 121	HSM HL 3521 S	2.95 x 3800
6236 993 131	HSM HL 3521 S	2.95 x 4000
6236 993 141	HSM HL 3521 S / HL 3521 T	2.95 x 4200
6236 993 161	HSM HL 3521 S	2.95 x 4300
6236 993 151	HSM HL 3521 S	2.95 x 4500
6236 993 145	HSM HL 7009 / 7009 MGB / HL 4809 / HL 4812	2.45 x 4400



Polyester tape

Order number	Suitable for press models with standard equipment	Type	Tensile-strength	Length/roll	Tape width	Weight / roll
6205 993 010	HSM 8 TE	WG 30	280 kg	500 m	8.0 mm	2,2 kg
6212 993 010	HSM 12 Gigant	WG 40	380 kg	500 m	11.5 mm	3,3 kg
6314 993 000	HSM HL 1615	WG 45	580 kg	400 m	12.7 mm	3,9 kg
6514 993 000	HSM HL 3521 S	WG 55	670 kg	400 m	14.6 mm	4,5 kg



Tape clamps

Order number	Item	Weight / 1000 pcs
6127 990 101	HSM Tape clamps	12 kg

Find out more about HSM environmental technology expertise

HSM is one of the leading manufacturers of baling presses and document shredders worldwide. Get to know our whole product range at www.hsm.eu and ask for our special catalogue.

Simply call, email or send us a fax, we will be happy to help!



Technical details at a glance

Model	Pressing power in kN	Motor in kW	Cycle time when idling (theor.) in sec.	Bale size W x H x L in mm
HSM 8 TE	80	4	26	650 x 505 x 500
HSM 12 Gigant	140	7.5	30	800 x 600 x 900
HSM HL 1615	150	7.5	32	700 x 800 x 1100
HSM HL 3521 S	320	9.2	71	800 x 1000 x 1200
	320	22	44	800 x 1000 x 1200
HSM HL 3521 T	320	22	44	800 x 1000 x 1200
HSM HL 4809 ST	480	9.2 + 1.5	35	1100 x 750 x 1200
HSM HL 4812	480	15 / 22	37,5 / 27,3	1100 x 750 x 1200
HSM HL 7009	700	9.2 + 1.5	47	1100 x 1100 x 1200
HSM HL 7009 MGB	700	9.2 + 1.5	47	1100 x 1100 x 1200



Experience HSM's quality and service!

Which is the right baling press for you?

It is not always easy to decide which is the right system for a particular disposal task. We have specialists and dealers all over the world who can analyse your needs on site and give you detailed advice. Only then can you be sure that you will get the right baler to suit your specific requirements.

When does a baling press start paying for itself?

Are you wondering what financial benefits a baling press might have over your existing disposal system? We will calculate the costs you will save by using a baling press rather than external disposal for your individual situation.

What quality can I expect from HSM?

We build high-quality, reliable products to the highest standards of German engineering. In order to meet these standards, we produce the majority of components ourselves, and are certified according to DIN EN ISO 9001.

How long is my warranty?

All our baling presses have a one-year warranty (in single-shift operation).

And if something does go wrong?

We certainly won't leave you alone. Our service guarantees personal support in all service issues – before and after purchase! Our agents and trading partners provide advice and assistance in many countries worldwide.

HSM all-round service ...

... ensures that you no longer have to worry about maintenance prevention. HSM offers service contracts for every need – for the long service life of your press and to save you money.

Renting our baling presses?

HSM gives you the option of renting our baling presses. There are various possibilities which our sales team will be happy to explain.

Any special wishes?

Some materials place special demands on a baling press, HSM offers various versions to meet these requirements. Special solutions are also available on request.

Bale weight in kg	Strapping x times	Loading hatch W x H (mm)	Loading height in mm	Machine dimensions W x D x H in mm	Machine weight in kg
up to 70	3	645 x 730	690	2505 x 813 x 868	554
up to 170	3	800 x 1200	780	4263 x 1030 x 1623	1330
up to 200	4	800 x 2100	990	4470 x 1343 x 2042	1890
up to 600	6	740 x 2100	1200	7900 x 1723 x 2493	7000
up to 600	6	740 x 2100	1200	7900 x 1723 x 2493	7100
up to 850	5	740 x 2100	1200	8120 x 1870 x 2658	8100
up to 420	4	1020 x 900	-	5926 x 1978 x 2042	approx. 5900
up to 420	4	1020 x 1250	1455	5116 x 2411 x 2558 (bevelled hopper)	approx. 7000
up to 600	4	1020 x 900	-	5992 x 2066 x 2394	approx. 7400
up to 600	4	1020 x 900	-	5813 x 1994 x 3690	approx. 7400

Explanation of the technical data

Pressing power:	Cylinder piston surface multiplied by the maximum hydraulic pressure (theoretical value).
Motor:	Rated power of driving motor.
Voltage / Frequency:	Three-phase power supply.
Loading aperture:	Size of the opening through which material can be loaded.
Loading height:	Height from floor to loading edge.
Bale weight:	The bale weight varies depending on the type, humidity and condition of the compressed material and the bale length or height.
Bale size:	The height/length of the bales varies depending on the expansion force of the compressed material.
Cycle time in idle operation (theor.):	Time in which the press plate moves towards the counter plate in idle operation and returns to the initial or starting position. The cycle time does not depend on the material.
Volume throughput in idle operation (theor.):	The maximum volume that can be theoretically pressed in one hour without interruption of the pressing procedure for loading or strapping. It is calculated by dividing the press chamber volume by the pressing time.
Press chamber size:	The press chamber is the space below the press ram in the home position.
Dimensions of machine:	External dimensions of the machine when set up for operation.
Transport height:	Height for moving to the installation site (without hand pallet truck).
Machine weight:	Net weight of the machine without packaging, loaded material or options.
Strapping:	The number of times the bales are strapped.



● **Head office and production sites in Germany**

HSM GmbH + Co. KG
Austraße 1-9
88699 Frickingen / Germany
Tel. + 49 7554 2100-0
Fax + 49 7554 2100-160
info@hsm.eu
www.hsm.eu

○ **Subsidiaries**

HSM Técnica de Oficina y Medioambiente España, S.L.U.
HSM France SAS
HSM (UK) Ltd.
HSM Polska Sp. z o.o.
HSM of America LLC
HSM China Ltd.

● **Sales and service points**

All specifications are listed without guarantee. Technical and design modifications reserved.
For latest product specifications visit www.hsm.eu